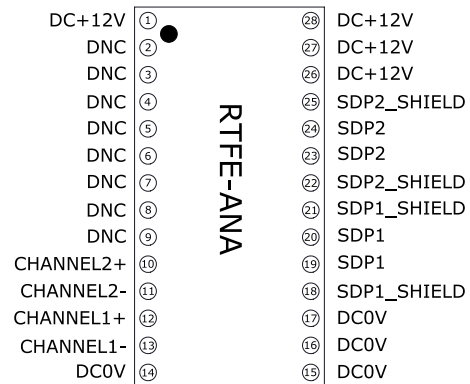


FEATURES

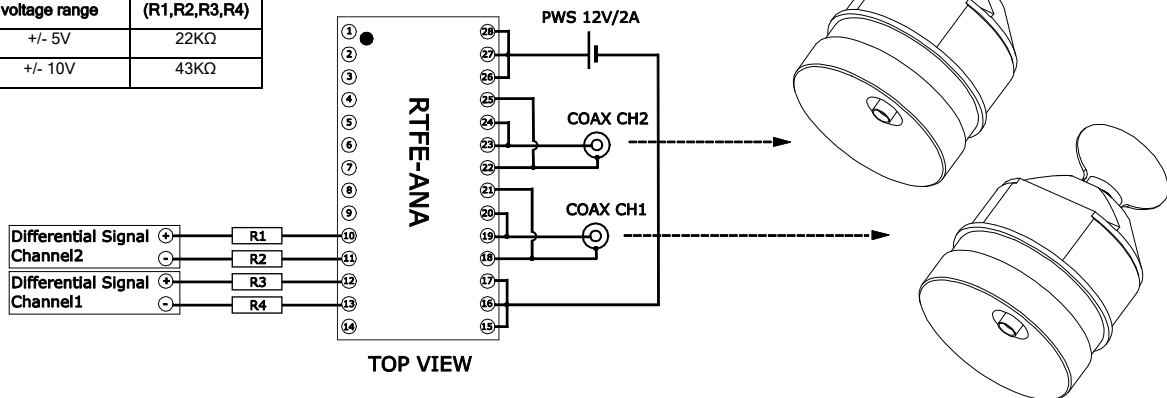
- Analog to SDP transfer protocol convertor
- Differential setpoint input +/- 5V or +/- 10V
- Dual-in-line package
- Fits standard Socket IC, DIL, 0.6", 28 way
- Connector type: DIP
- Row Pitch: 15.24 mm
- Pitch Spacing: 2.54 mm



TOP VIEW

TYPICAL APPLICATION CONNECTIONS

Differential setpoint voltage range	Resistor value (R1,R2,R3,R4)
+/- 5V	22KΩ
+/- 10V	43KΩ

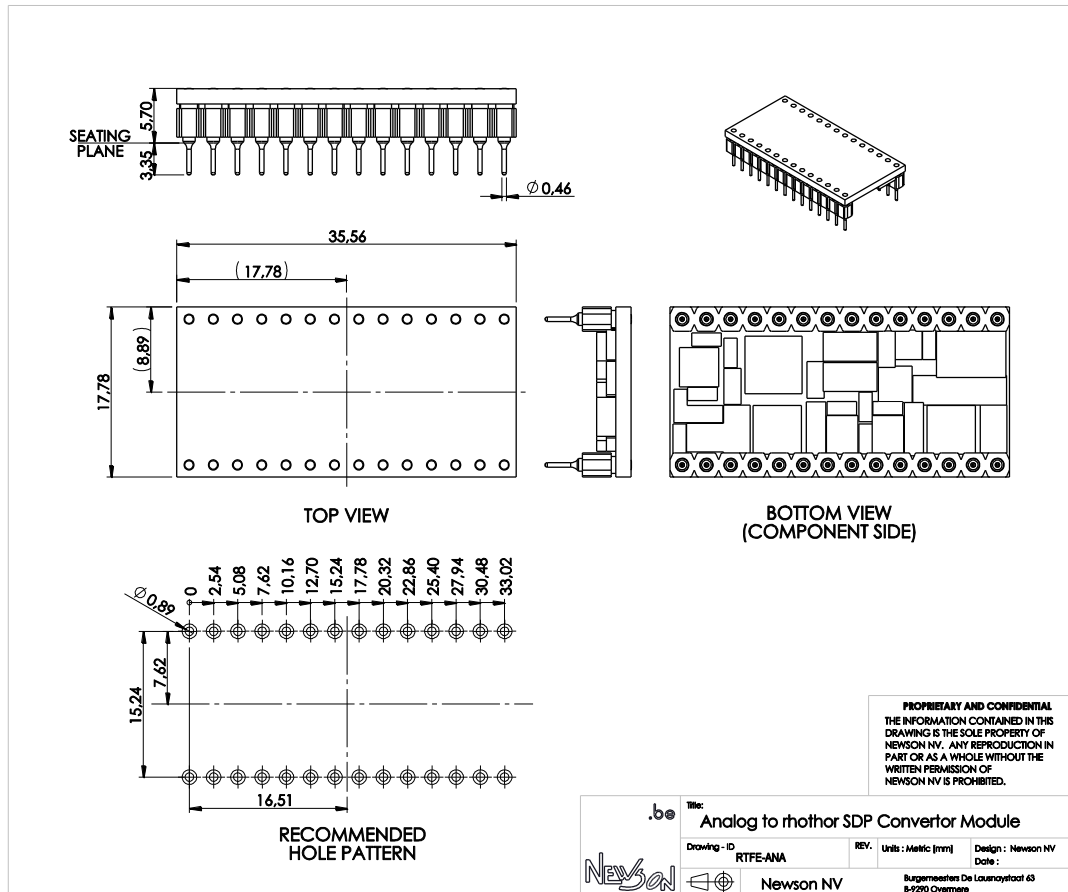


TOP VIEW

PIN DESCRIPTION

Pin No.	Name	Description
1,26,27,28	DC+12V	Power supply input 12V
14,15,16,17	DC 0V	Power supply input 0V
2,3,4,5,6,7,8,9	DNC	Do not connect
10	CHANNEL2+	Setpoint input channel2
11	CHANNEL2-	Setpoint input channel2
12	CHANNEL1+	Setpoint input channel1
13	CHANNEL1-	Setpoint input channel1
18,21	SDP1_SHIELD	Connection to deflector channel1
19,20	SDP1	Connection to deflector channel1
22,25	SDP2_SHIELD	Connection to deflector channel2
23,24	SDP2	Connection to deflector channel2

PACKAGE INFORMATION



ELECTRICAL DATA

Description	Name	Min	Type	Max	Units
Power Supply	DC+12V	4.5	12	13	V
Power RMS current	I _{DC} +12V		0.2	0.6	A(*)
Power Peak Current			3		A(*)(**)
Differential setpoint voltage range +/- 5V					
Differential setpoint input	IN ₊ - IN ₋	-5		5	V
Differential setpoint input slew rate				500	V/sec
Common mode setpoint input	(IN ₊ + IN ₋)/2	-2.5		2.5	V
Input Impedance			25		kΩ
Differential setpoint voltage range +/- 10V					
Differential setpoint input	IN ₊ - IN ₋	-10		10	V
Differential setpoint input slew rate				1000	V/sec
Common mode setpoint input	(IN ₊ + IN ₋)/2	-5		5	V
Input Impedance			46		kΩ

(*) Measure conditions: input voltage of 12V DC

(**) Peak current level and frequency depends on deflector movements. Peak current duration is approximately 200µsec. The applied input DC voltage to the deflector should be 12V DC. However during current spikes, the power supply input voltage is allowed to drop to 4.5V.